

Infinite Campus Security Alerts and Veification Codes

Logging into Infinite Campus for the first time, or from a new device

Users logging into Campus for the first time from a device will be required to enter an **Account Security Email** address (if one is not already present within Campus) and will be directed to a new screen where they will have to enter a verification code and decide if they would like the device to be remembered for future logins (Image 7).

In order for a device to be recognized for future logins, your browser MUST be set to allow cookies.

Having your browser set to automatically delete cookies will cause the device to not be recognized and force you to go through this process each time you log into Campus.

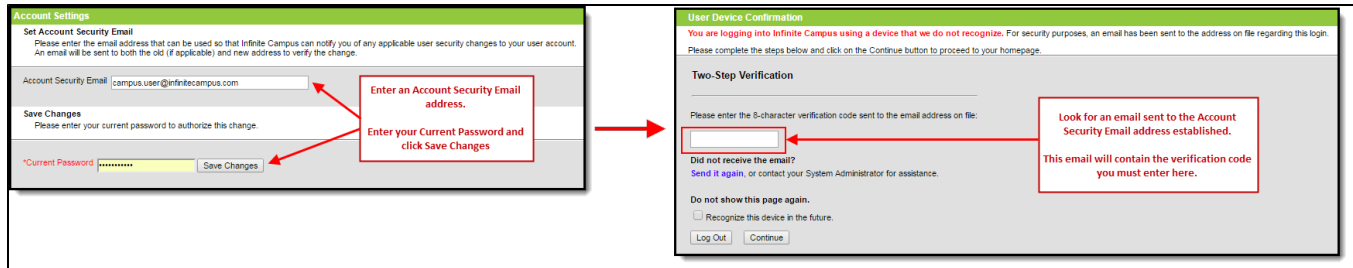


Image 7: Entering an Account Security Email and Entering a Verification Code

Below is an example of the email that will be sent to your account (Image 8). This email contains the 8-character verification code that must be entered in the box show above (Image 7).

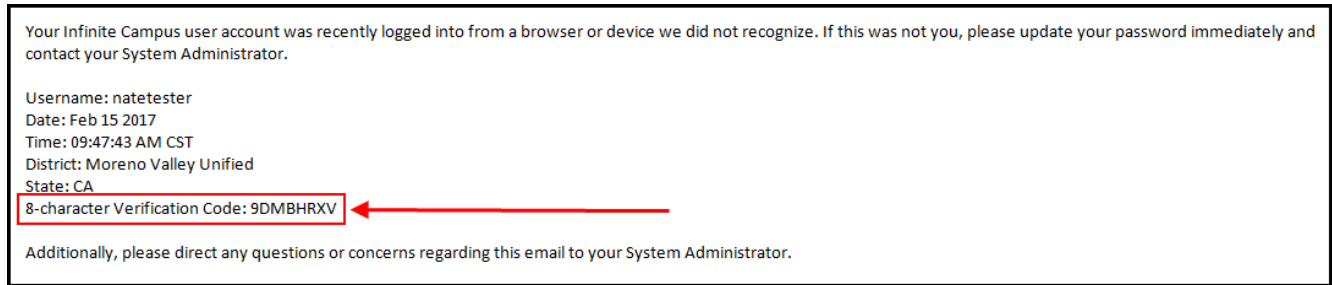


Image 8: Finding the Verification Code

Enter the 8-character verification code into the box shown below, decide if the device should be remembered for future logins by marking the **Recognized this device in the future** checkbox, and click **Continue** (Image 9). The device is now verified and you will no longer receive notification emails when logging into Campus using this device.

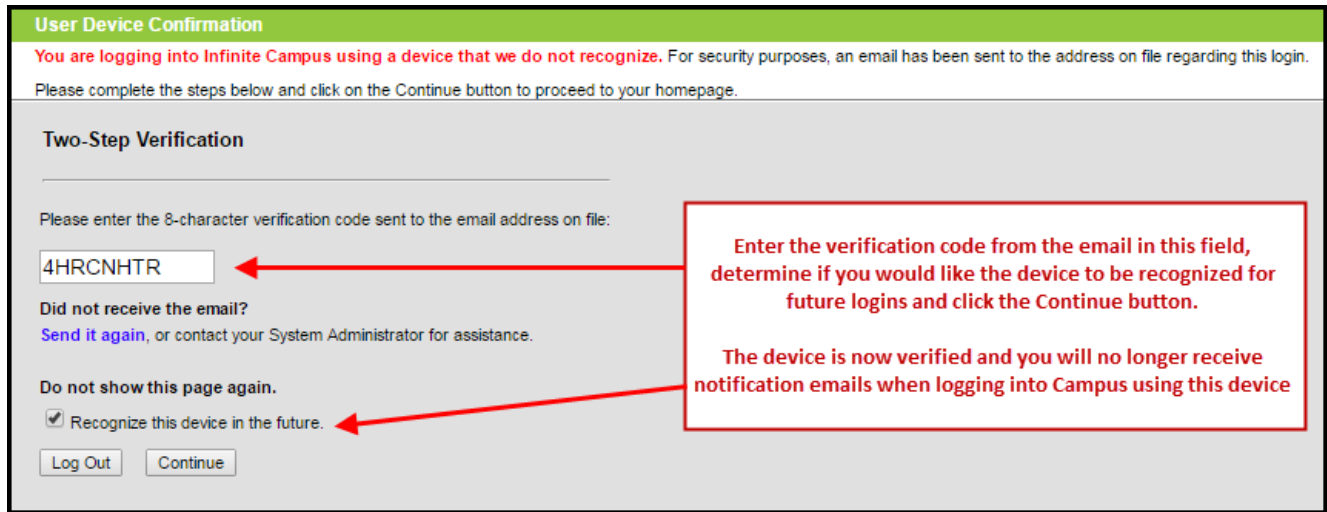


Image 9: Entering a Verification Code

Related articles

- [Infinite Campus Security Alerts and Veification Codes](#)